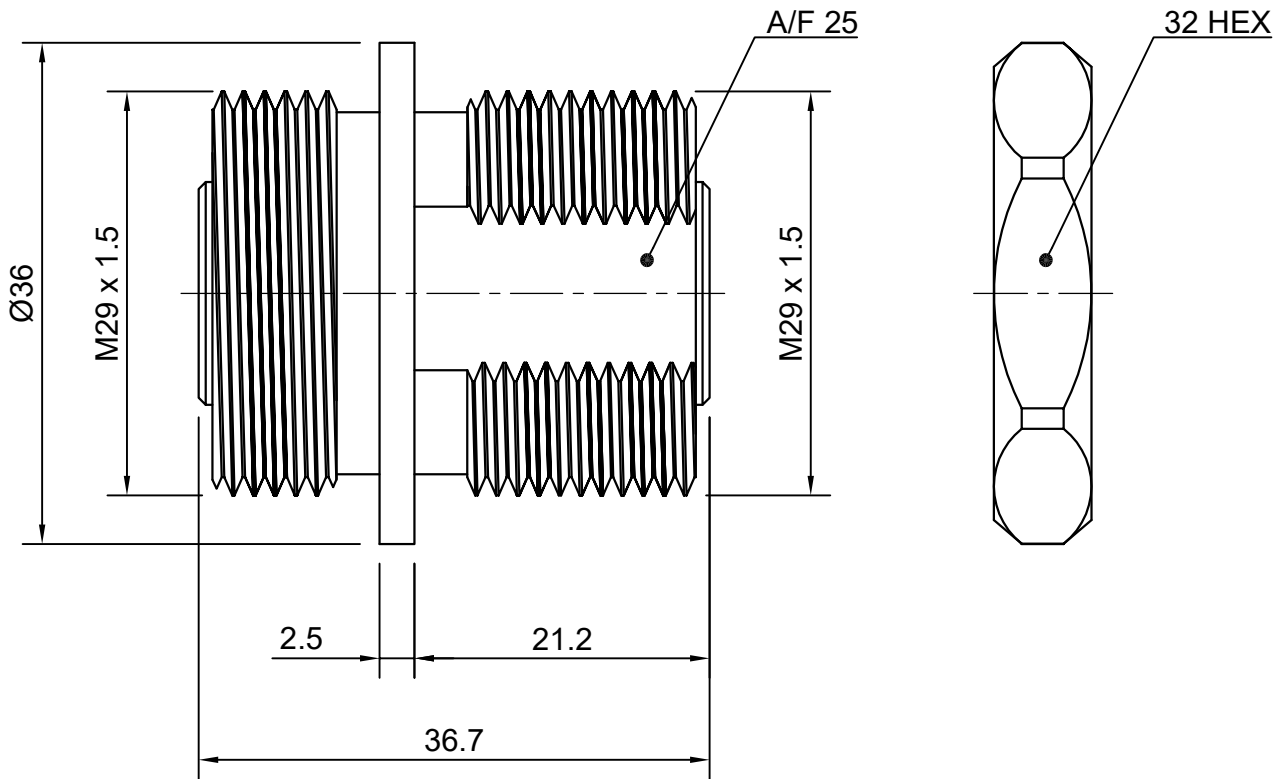


RevNo	Revision note	Date	Signature	Checked



TECHNICAL DATA

Type	Adapter
Orientation	Straight
Impedance (Ohms)	50
Adapter Side 1	7/16 (DIN)
Side 1 Gender	Jack
Adapter Side 2	7/16 (DIN)
Side 2 Gender	Jack
Body Finish	White Bronze
Body Material	Brass
Contact Finish	Silver
Contact Material	Brass
Insulator Material	PTFE
Max. Frequency (GHz)	7.5
Mounting Feature	Bulkhead
Min. Temp. (Celsius)	-65
Max. Temp. (Celsius)	165
Weight (Grams)	0.0

	SHEET	1 of 1	SCALE	NTS
	RF ADAPTER			
	7/16 (DIN) Female to 7/16 (DIN) Female			
	BULKHEAD PANEL MOUNT TYPE			
	DWG NO	VSW-AD-103272-S		
DRAWN	VINAY	25.10.2018		
CHECK				
APPR.	VINAY	25.10.2018		
ISSUED				
REV	R0			

FILE PATH: D:\VINSUR\DRAWINGS -- VINSUR\ADAPTERS\DIN - DIN
 FILE NAME: ADAPTER - DIN Female to DIN Female Bulk Head - VSW-AD-103272-S.dwg

SIZE